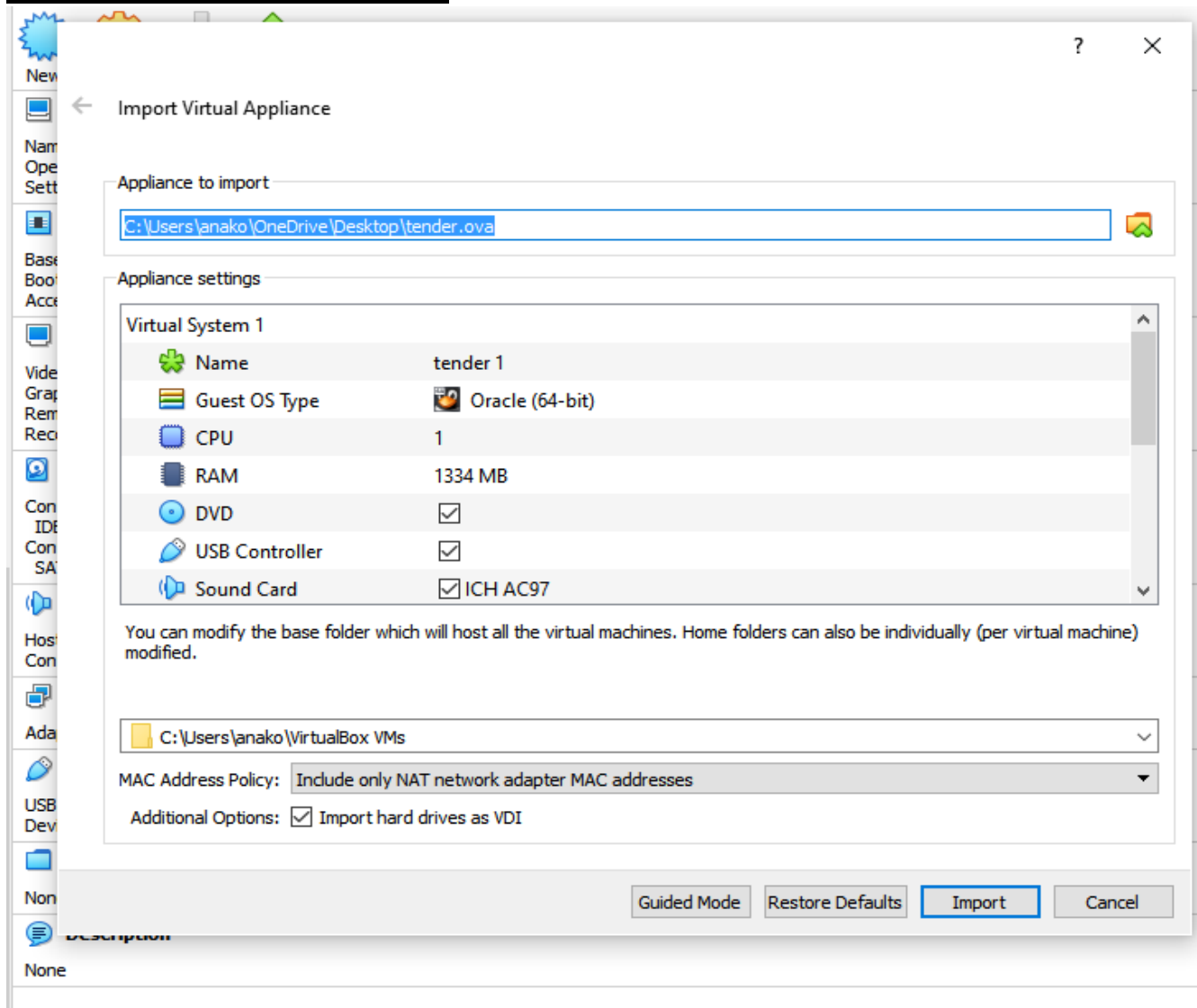
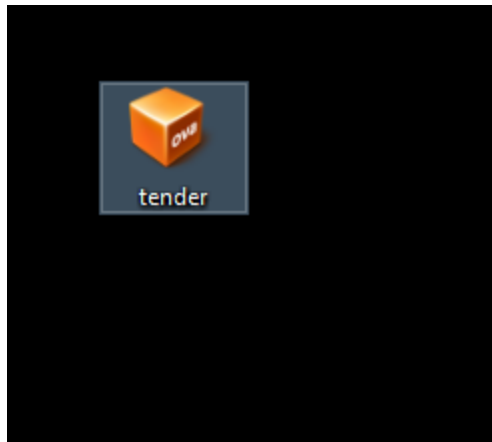
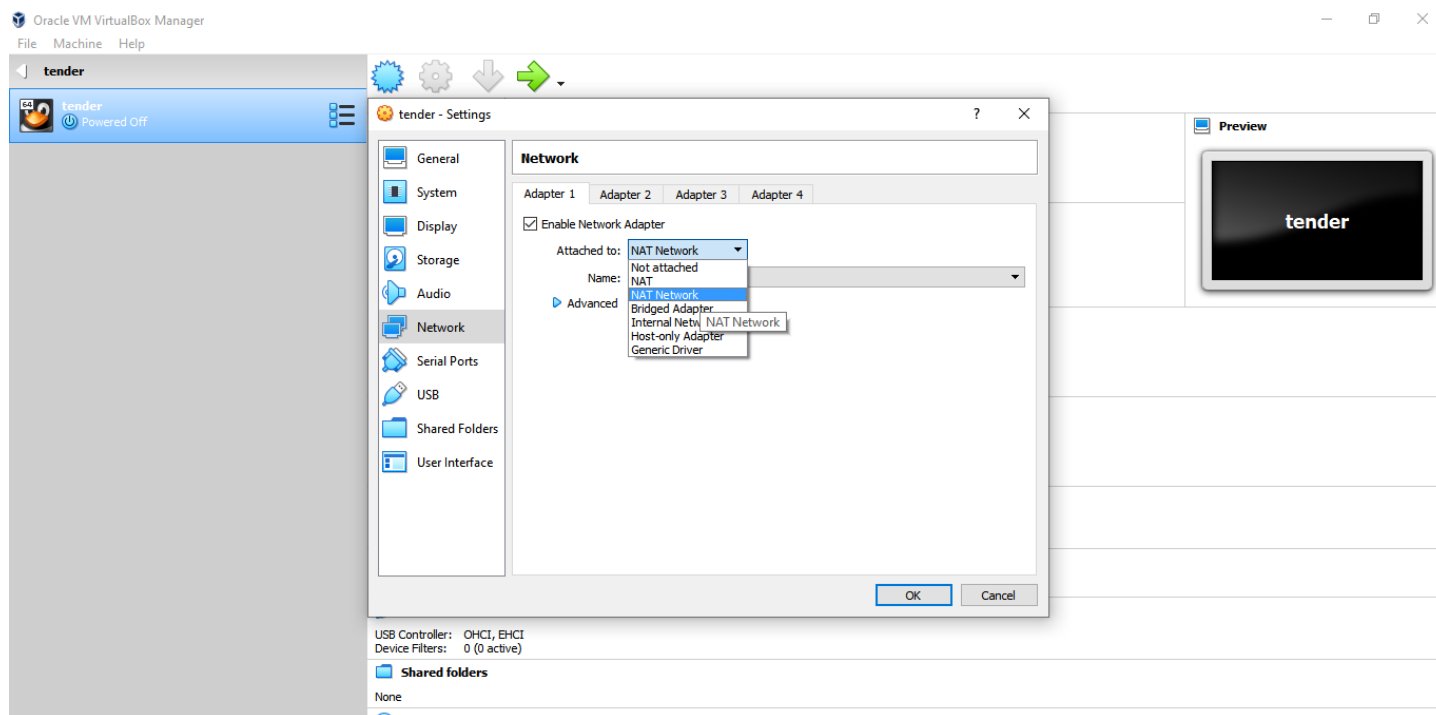


# How to Start

→ Let's open this OVA file, it will redirect you to virtual Box, import this ova file by choosing your desired location.



- ➔ Go to settings set network to NAT NETWORK, your kali machine (attacker machine) should on same network. I checked it on NAT NETWORK, you can choose bridge network also.



- ➔ Start both machines and HERE WE GO!
- ➔ Check is VM assign you IP or not by this command in kali machine (attacker machine).
  - `sudo arp-scan -I`

Once you get IP you can start with nmap for port scanning!

**GOOD LUCK!**